



İSTANBUL PASLANMAZ ÇELİK

DALGALI KATALOG

İSTANBUL PASLANMAZ ÇELİK

CATALOG WATER RIPPLE

İSTANBUL PASLANMAZ ÇELİK HISTORY



About us

In the modern era, stainless steel has become a symbol of innovation and durability. As Istanbul Stainless Steel San. Tic. Inc. we continue to passionately provide you with quality service with our over 60 years of experience and industry-known standards.

We have a wide range of products to meet your needs and contribute to the success of your industrial projects by providing products and solutions that exceed our customers' expectations.



Our expert teams work closely with you to understand your needs and produce solutions tailored to your project requirements.

Thanks to our high-quality materials, unique stocks and quality control procedures that exceed industry standards, we provide you with reliable and sustainable products.

You can explore our product portfolio specially prepared for you on our website. We are here for all your stainless steel needs.

We look forward to collaborating with you and supporting you with creative stainless steel solutions.



İSTANBUL PASLANMAZ ÇELİK

İstanbul

“
The premium
company of
stainless steel ”



**İSTANBUL PASLANMAZ ÇELİK
ZEYTİNBURNU MERKEZ OFİS**

Demirciler Sitesi 2.Yol No.20
Zeytinburnu / İstanbul



**İSTANBUL PASLANMAZ ÇELİK
DİLOVAŞI FABRİKA**

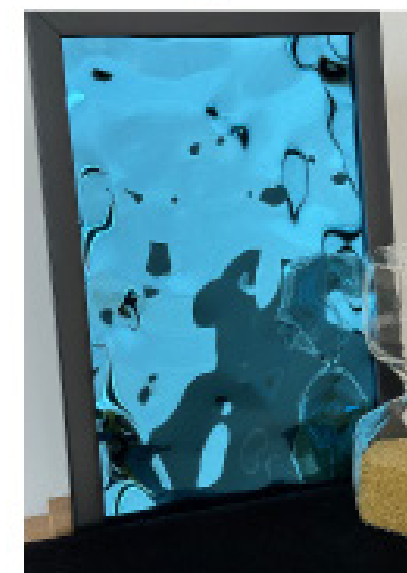
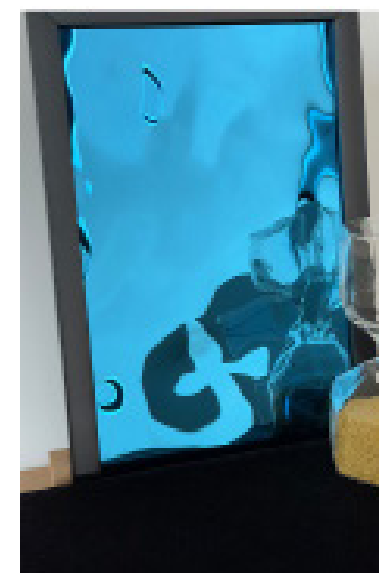
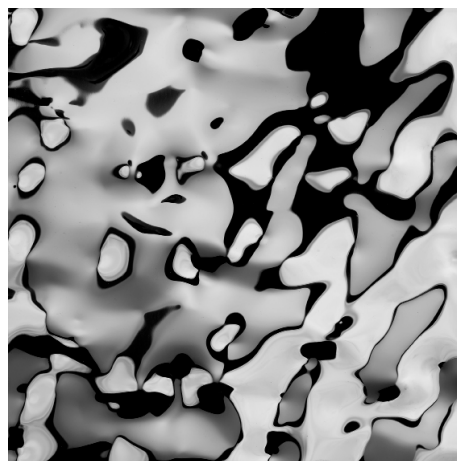
Çerkeşli Mahallesi İMES OSB
14. Cadde No: 3 Dilovası / Kocaeli

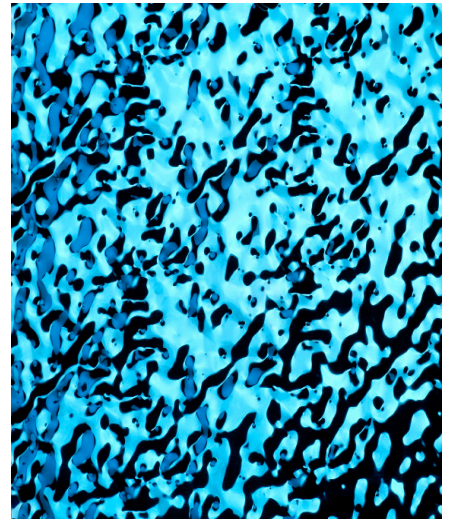
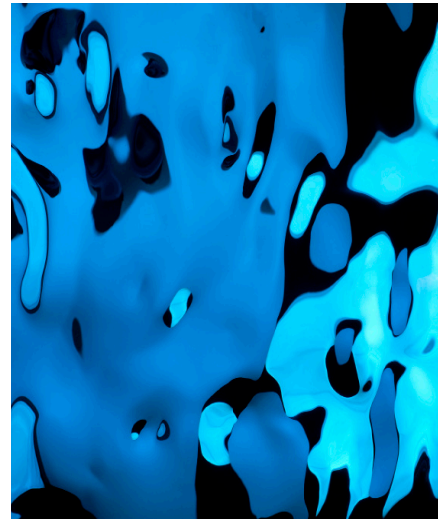
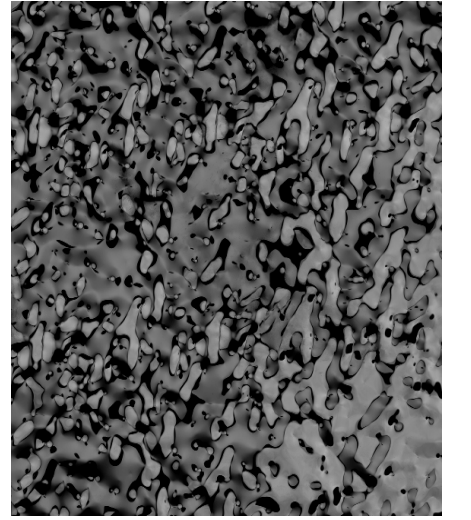
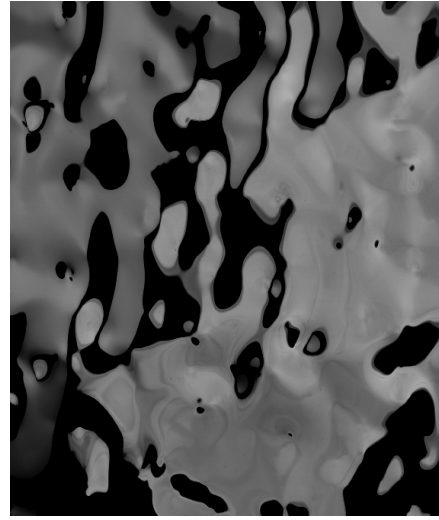
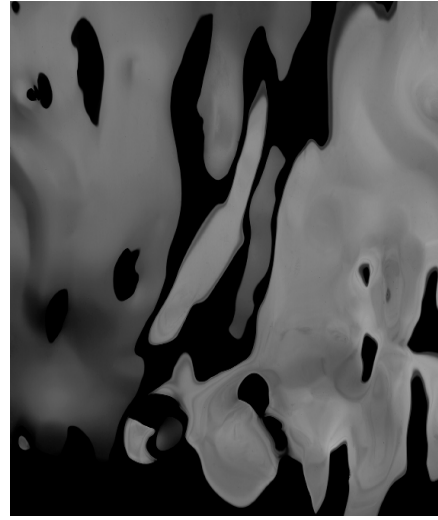
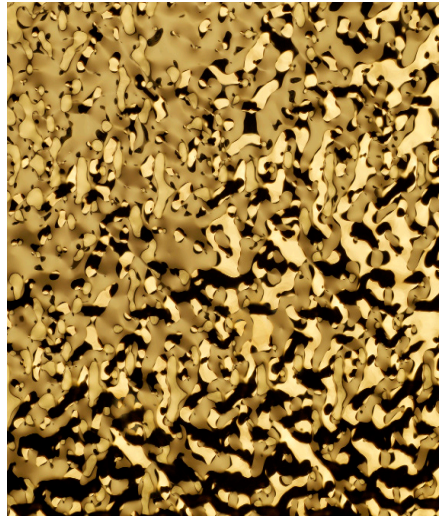
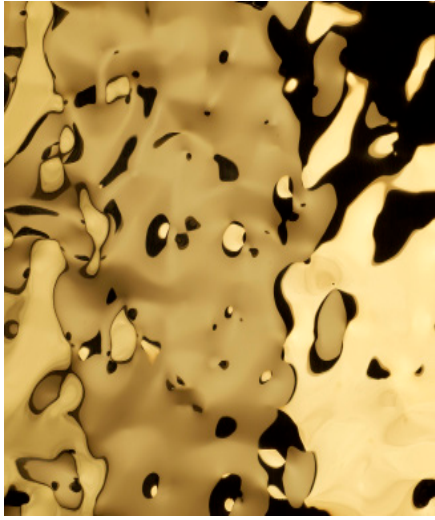
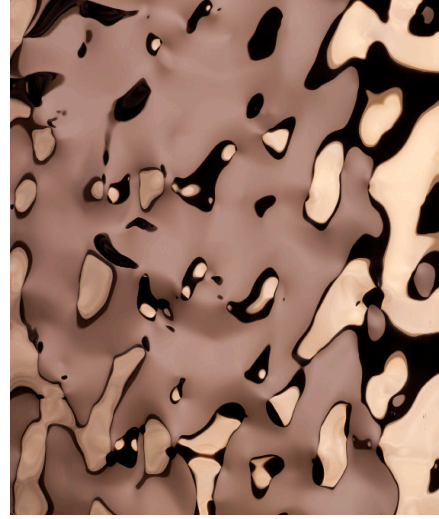
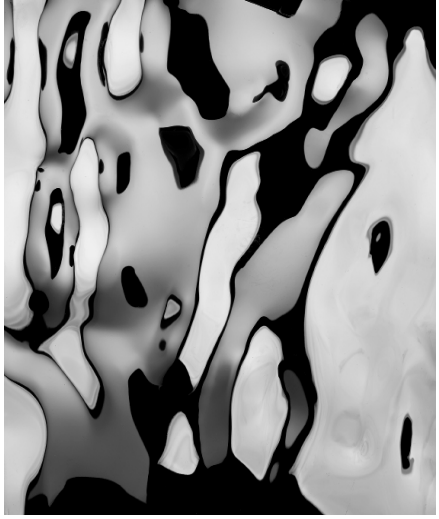
Water Ripple Stainless Steel

It is a stainless steel material generally used for decorative purposes. This plate is based on stainless steel mirror plate. It is formed by a stamped die, resulting in the sheet being deformed into an irregular, three-dimensional water ripple pattern.

This material is widely used for ceiling and wall decoration indoors and outdoors and is the most popular among designers.

It is one of the popular decorative materials. Application areas include places such as ceiling and wall coverings.





Water Ripple Stainless Steel Models

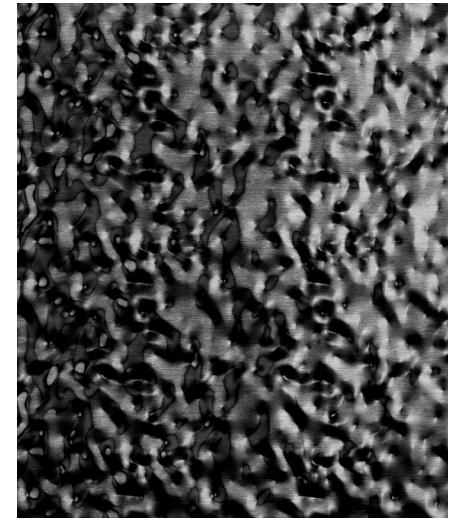
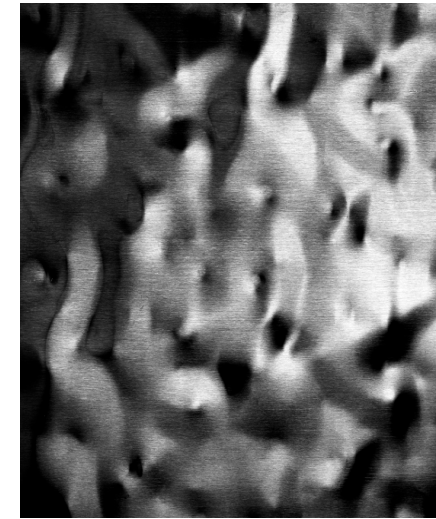
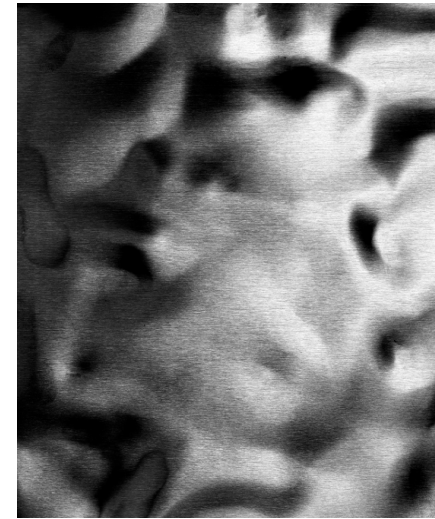
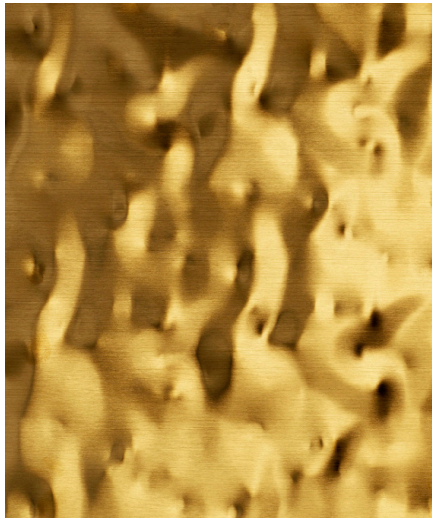
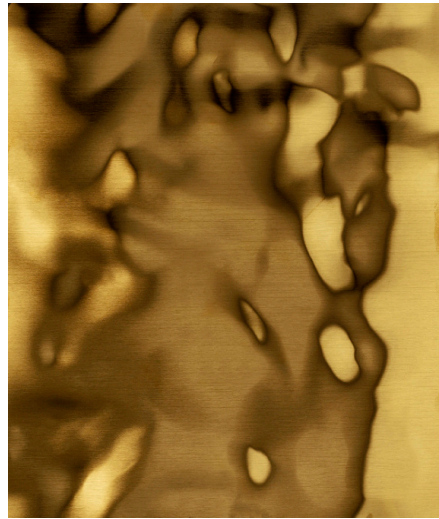
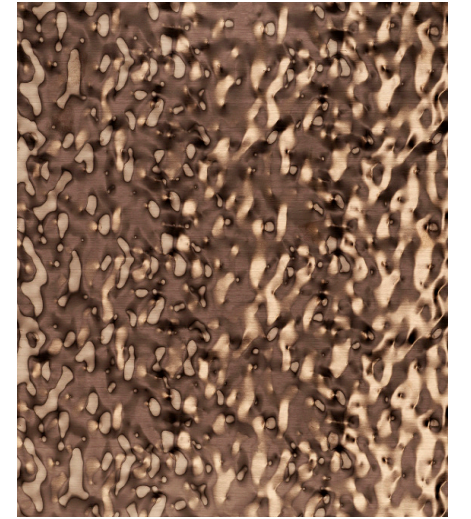
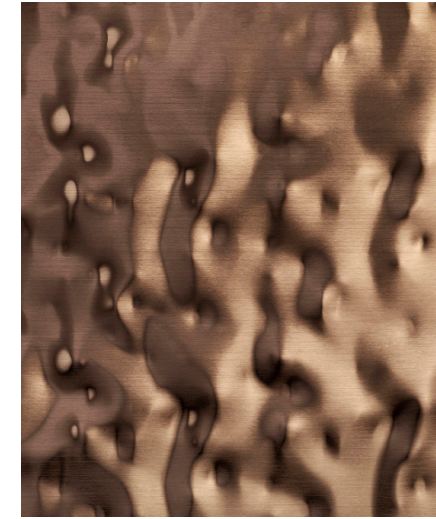
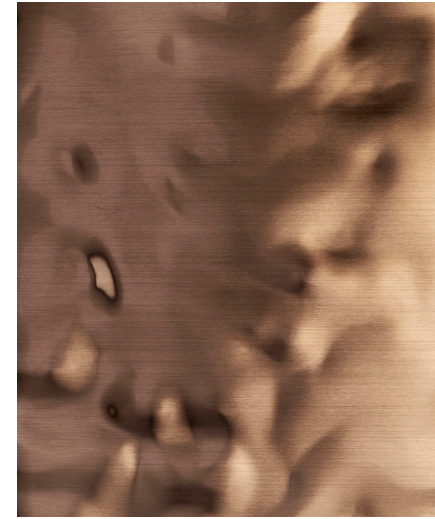
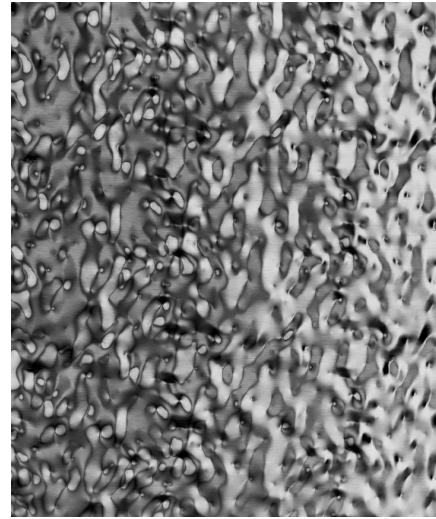
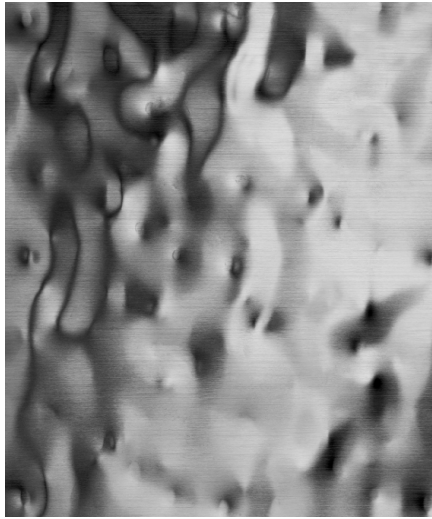
N8 (L-M-S)
N8 GOLD (L-M-S)
N8 ROSE GOLD (L-M-S)



Water Ripple Stainless Steel Models

N8 BRONZE (L-M-S)
N8 BLACK (L-M-S)
N8 BLUE (L-M-S)





Water Ripple Stainless Steel Models

HL (L-M-S)
HL GOLD (L-M-S)

Standard features

Material: SUS430, SUS304, SUS316, SUS201
Thickness: 0.5mm-3.0mm
Maximum width: 1500mm / Maximum length: 6000mm

If you have any questions, please contact us.

Water Ripple Stainless Steel Models

HL BRONZE (L-M-S)
HL BLACK (L-M-S)

Use and maintenance rules:

1. Use soft cotton cloth directly or with pure water to clean the surface, then dry the surface.
2. Do not use acidic solvent, alkaline solvent or thinner to clean the surface.
3. Do not use sandpaper or similar hard things to clean the surface.
4. Do not allow the PVC protective layer to remain on the stainless steel surface any longer.
5. To prevent sticky glue residues on the stainless steel surface
Do not keep PVC on the surface for more than 90 days from the date of delivery.

SHOWROOM



Istanbul Stainless Steel showroom in our
Dilovası Facility

We are pleased to invite you to our
showroom, the preparations of which we
have completed with great excitement.

In this special place where we will introduce
and present our new collections,
products and designs to our valued
customers.

It will shed light on the architectural systems
of its customers. You also have the oppor-
tunity to compare our products with other
features such as marble and wood.

Since we display the plates in real sizes, you
will be able to get a more realistic reflection
in your project applications.



APPLICATIONS

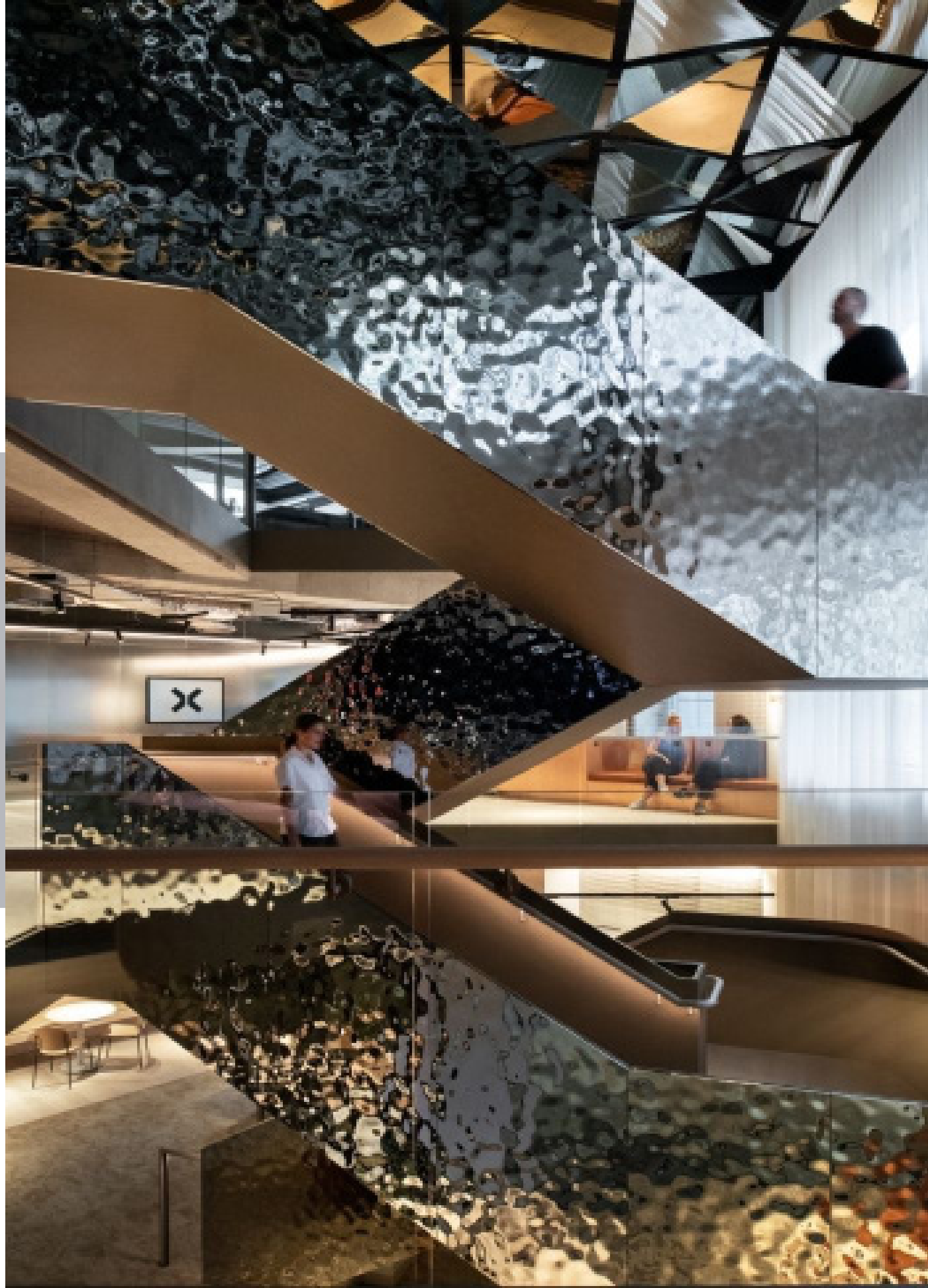
WATER RIPPLES



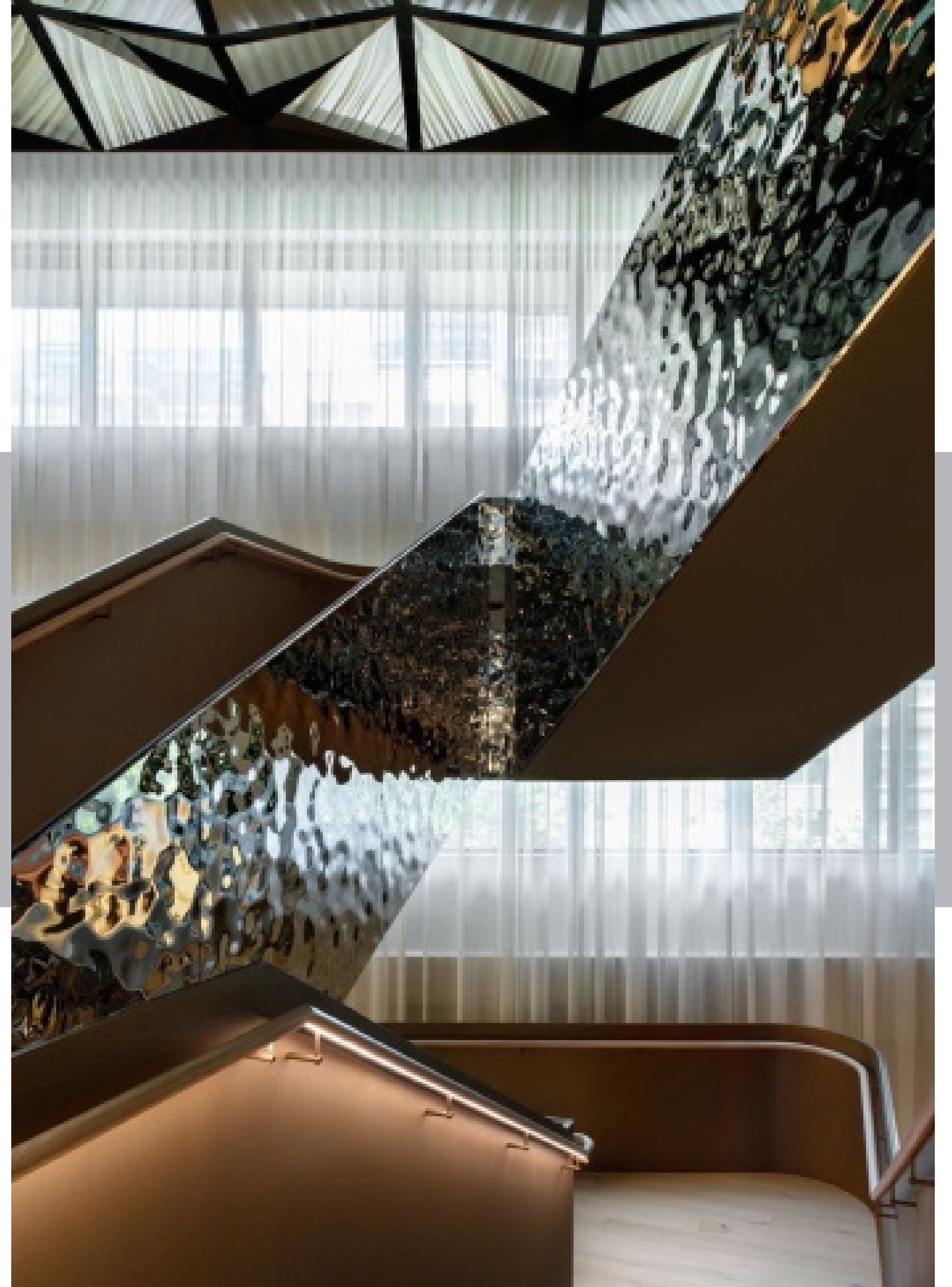
İSTANBUL PASLANMAZ ÇELİK



İSTANBUL PASLANMAZ ÇELİK



İSTANBUL PASLANMAZ ÇELİK



İSTANBUL PASLANMAZ ÇELİK



İSTANBUL PASLANMAZ ÇELİK



İSTANBUL PASLANMAZ ÇELİK



İSTANBUL PASLANMAZ ÇELİK



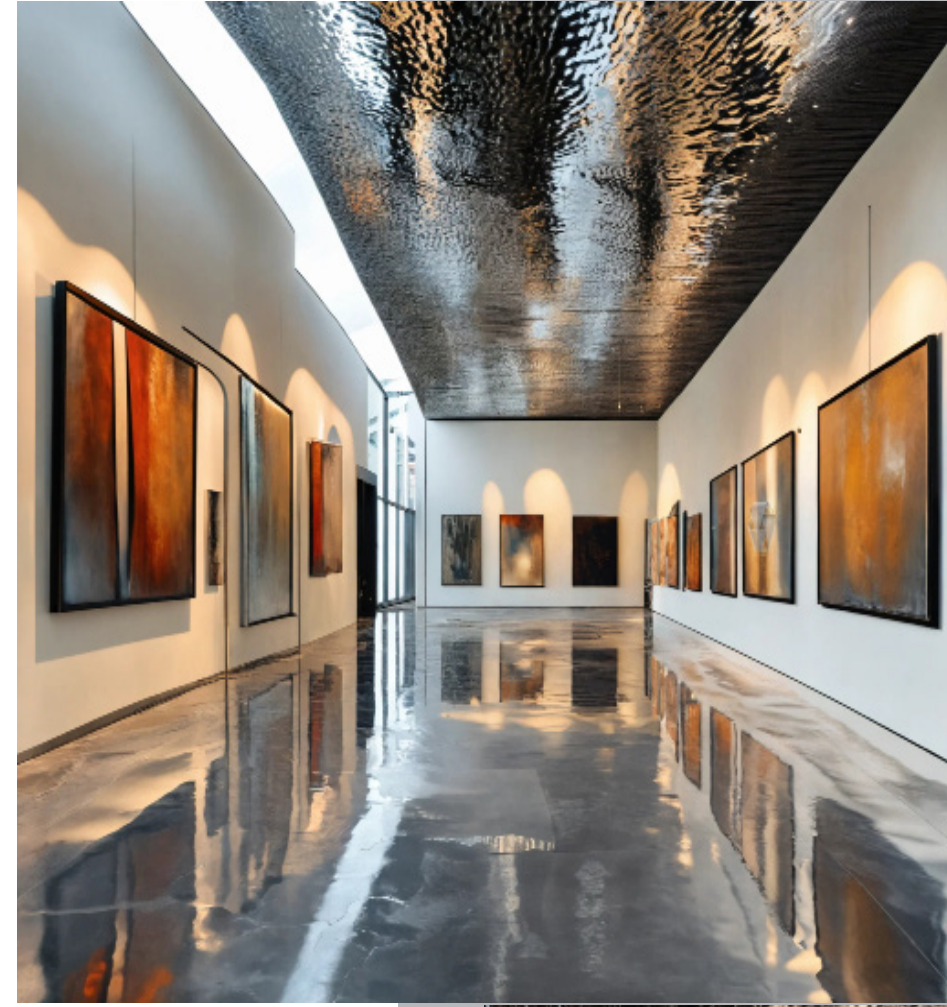
İSTANBUL PASLANMAZ ÇELİK



İSTANBUL PASLANMAZ ÇELİK



İSTANBUL PASLANMAZ ÇELİK



İSTANBUL PASLANMAZ ÇELİK



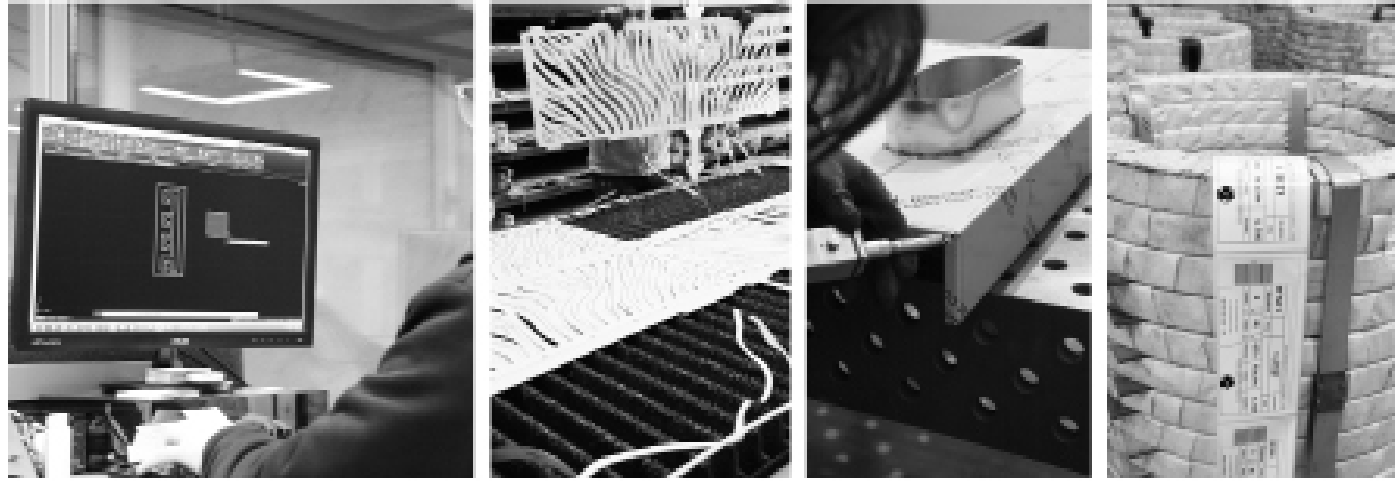
İSTANBUL PASLANMAZ ÇELİK



İSTANBUL PASLANMAZ ÇELİK



İSTANBUL PASLANMAZ ÇELİK



Stainless Steel Quality Characteristics According to Classes

Property	Grade 201	Grade 304	Grade 316	Grade 430
Composition	17% Cr, 4% Ni, 7% Mn, 0.15% C	18% Cr, 8% Ni, 0.08% C	16% Cr, 10% Ni, 2% Mo, 0.08% C	16-18% Cr, 0.75% Ni, 0.12% C
Corrosion Resistance	Moderate	High	Very High	Moderate
Magnetic Properties	Slightly magnetic in some conditions	Non-magnetic in annealed condition	Non-magnetic in annealed condition	Magnetic
Tensile Strength	515 MPa	505 MPa	515 MPa	450 MPa
Yield Strength	275 MPa	215 MPa	205 MPa	275 MPa
Elongation	40%	70%	60%	30%
Hardness (Brinell)	210	201	217	183
Formability	Good	Excellent	Good	Fair
Weldability	Fair	Excellent	Excellent	Fair
Typical Applications	Automotive trim, cookware, sinks	Kitchen equipment, storage tanks, building facades	Marine equipment, chemical processing, medical devices	Automotive trim, dishwasher liners, architectural applications



The information provided below is correct for your project,
it is your guide in choosing a decorative stainless steel product.

BEGINNING:

Please determine the environment where the material will be used: Indoor / Outdoor / Seaside and
Please describe the application scenario of the material: areas of use include wall cladding, room partitions, interior decoration, ceiling, furniture, signage and more.

MATERIAL TYPE:

To access our material patterns and colors, visit www.istanbulpaslanmaz.com.tr.

PRODUCT SIZE, SHAPE AND QUANTITY:

Determine thickness, quality and product quantity.

PROCESS:

For bending or Laser cutting, please determine if further processing is needed.

PROVIDE DESIGN DRAWINGS:

We can deal with your project in more detail according to your design drawings.

ORDER DETAILS

Wooden Package Details:

- 1) The material surface is coated with designated pvc (fiber pvc, laser pvc and black white pvc).
- 2) It is protected by placing plywood under and on top of the material.
- 3) It is surrounded by side protections.
- 4) For domestic purposes, it is packaged with the sides open.
- 5) The sides of overseas packages are also covered with wood.

PVC DETAILS

Fiber Laser Surface Protection Film

It is produced in accordance with new generation fiber laser cutting. The same film can be cut with a carbon laser machine.

Laser Surface Protection Film

It is suitable for old generation laser cutting. Fiber causes machines to slow down and decrease cutting quality.

Black White and Other Surface Protection Films

It may not give healthy results with laser machines. It is mostly preferred in productions such as guillotine, press and press brake due to its easy disassembly.

Since surface protection films have a short lifespan, they must be removed immediately without damaging the surface. Cold and hot air transitions increase the possibility of PVCs leaving adhesive on the surface.

DELIVERY TIME:

3-5 days for standard products

90 days for customized products



İSTANBUL PASLANMAZ ÇELİK